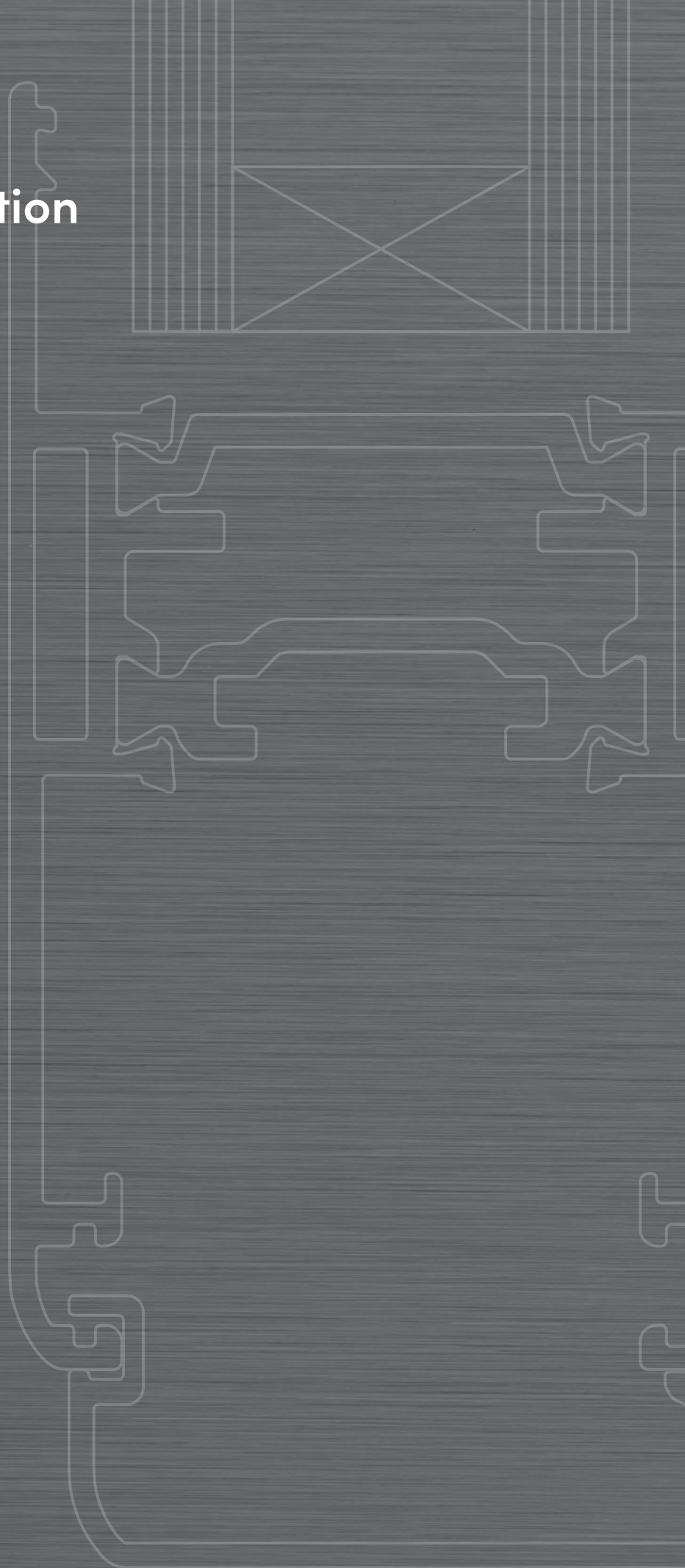
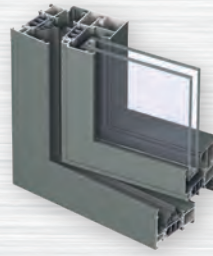


Technical section



Aluminum



Venezia Line
Windows,
French doors



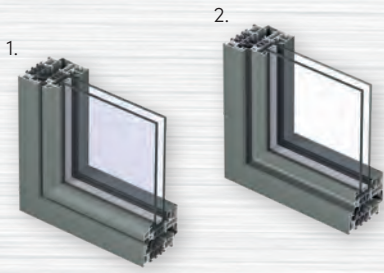
Venezia Line
Entrance door with
flush leaf

Uf values in W (m²K)	Uf 1.7 W/m ² *K	Uf 2.5 W/m ² *K
Uw values	1.4 W/m ² *K (Ug 1.0 + W.E.) 1.1 W/m ² *K (Ug 0.6 + W.E.)	1.4 W/m ² *K with triple-glazing and WARM EDGE groove
Water tightness EN 1027; EN 12208	E900	7A
Wind resistance EN 12211; EN 12210	C5	C2
Air permeability EN 1026; EN 12207	4	4
Acoustic insulation EN ISO 140-3; EN ISO 717-1	Up to 42 dB	Up to 42 dB
Burglar resistance	RC2	RC2
Panel or sash/frame thickness Construction depth	Frame 68 mm Panel or sash 77 mm	Frame 68 mm Panel or sash 68 mm
Glass thickness	Up to 53 mm	Up to 52 mm
Possible panel or sash/frame combinations	-	-

F: Suitable for climate zone F

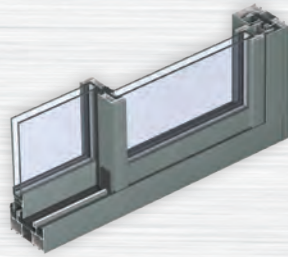
For the hinged system, the values were obtained on a sample door or window measuring 1230x1480

For the parallel sliding and lift&slide systems, the values were obtained on a sample door or window measuring 2500x2500



Firenze Line

Windows, French doors,
entrance door with overlap



SlimPatio 68

Sliding



Piva 66 TT

Windows, French doors
and doors

Uf 1.9 W/m ² *K	Uf 2.4 W/m ² *K	Uf 1.6 W/m ² K
1.3 W/m ² *K (Ug 1.0 + W.E.) 1.0 W/m ² *K (Ug 0.6 + W.E.)	Uw up to a 1.2 W/m ² K	Uw up to 1 W/m ² K
9A	8A (450 Pa)	E1500
C4	C5 (2000 Pa)	C5
4	4	4
Up to 45 dB	-	Up to 39 dB
RC2	RC2	-
Frame 76 mm Panel or sash 75/86 mm	Frame 120 mm Leaf 64 mm (two guides) Frame 176 mm (third guide)	-
Up to 55 mm	Up to 36 mm	-
1. Classic Panel/Sash Iron Frame 2. Cubic Panel/Sash Iron Frame	-	-